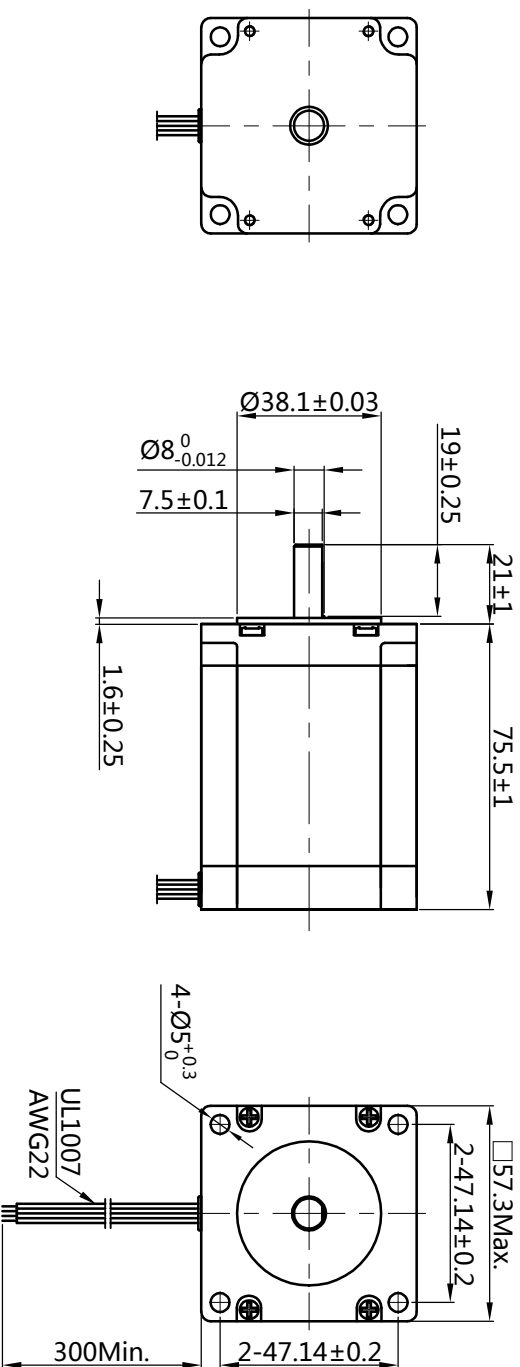
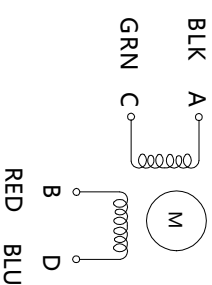


HYBRID STEPPING MOTOR SPECIFICATION

DIMENSIONS unit=mm

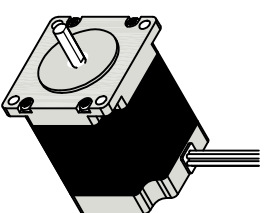


Wiring Diagram



Exciting Sequence vs. Direction of Rotation

STEP	A	B	C	D	CCW
1	+	+	-	-	 Clockwise view from mounting side
2	-	+	+	+	
3	-	-	+	+	
4	+	-	-	+	



Specifications		Comment	
1. Number of Phase	2		
2. Step Angle	1.8° deg.		
3. Rated Voltage	3.08 V		
4. Rated Current/Phase	2.8 A (Peak Value)		
5. Phase Resistance	1.1 Ω ±10%(20°C)		
6. Phase Inductance	3.6 mH±20%(1kHz 1V RMS)		
7. Holding Torque	1.89 N.m		
8. Insulation Class	B (130°) ; 80K Max.		
9. Weight	1.1 kg		

REVISION RECORD		DATE
DESIGN	YY	2020.06.29
STANDARD		
TECHNOLOGY		
CHECK		
APPROVE		

www.jkongmotor.com

TITLE	STEPPING MOTOR
DWG.NO.	JK57HS76-2804-14
MATERIAL	
REV.	A
SCALE	1:2
SHEET	1 of 1
SIZE	A4