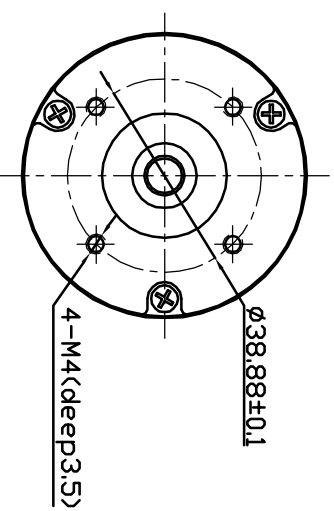
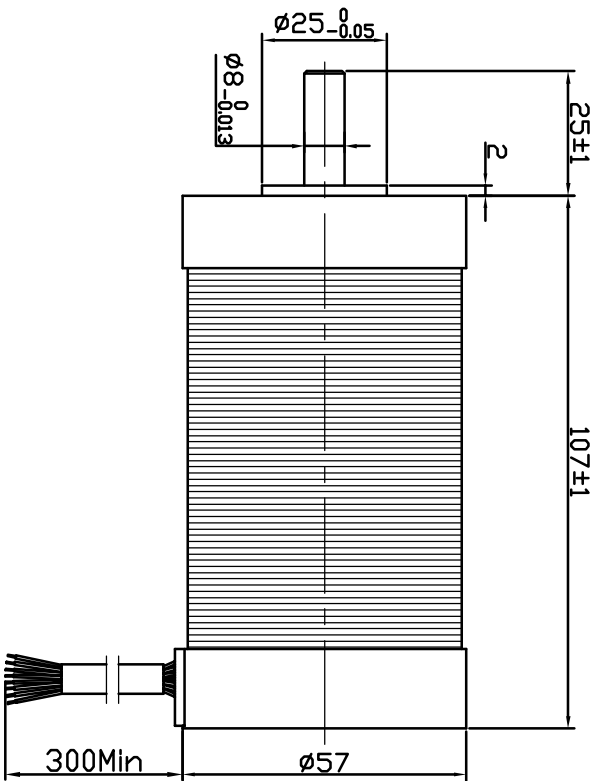
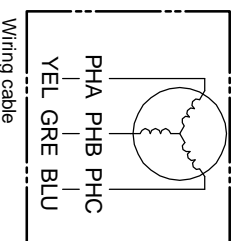
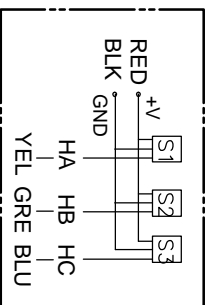


Dimension:
Unit=mm



Connection diagram:



Hall sensor cable
Note: hall sensor power supply
voltage +5 to +20VDC

ROTATION: CCW SEE FROM LEAD END	
MANUFACTURER MODEL	JK57BL S04
NUMBER OF POLES	4
PHASE TO PHASE RESISTANCE	0.42 OHMS
NOMINAL VOLTAGE	36 VDC
NO LOAD SPEED	4800±10% RPM
NO LOAD CURRENT	0.9 Amps Max.
RATED TORQUE	0.44 N-m
RATED SPEED	4000±10% RPM
OUTPUT POWER	184 W
BACK EMF CONSTANT	7.5 V/KRPM
TORQUE CONSTANT	0.072 N-m/A
INSULATION CLASS	B

ELECTRICAL CONNECTION TABLE	
+5V	RED 红
HALL U	YEL 黄
HALL V	GRE 绿
HALL W	BLU 蓝
GND	GND 黑
PHASE U	YEL 黄
PHASE V	GRE 绿
PHASE W	BLU 蓝
	UL1007
	18AWG

DESIGN	REV. QTY.	No.	STD.	SIG.	DATE
CHECK					
PREC.					

Title:		常州精控电机电器有限公司	
Specification		JK57BL S04	
DESIGN	CLS.MAK	WEIGHT	SCALE
CHECK			
PREC.			
PAGE:	1/1		
www.jkongmotor.com			